

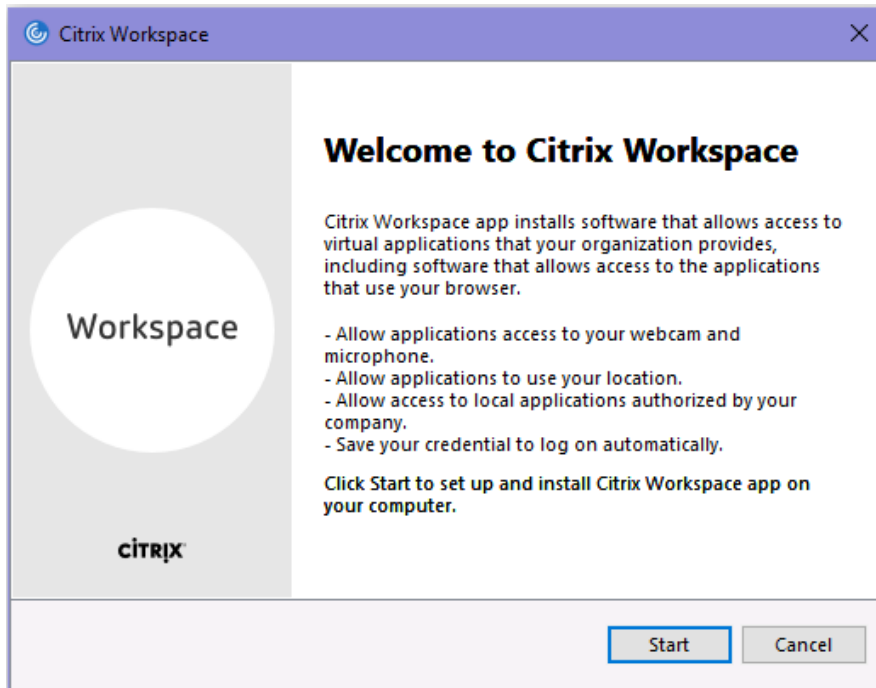
Citrix Workspace App Setup for ACBH – Windows

For Windows 10, 8.1, 7, 2008R2, Thin PC as well as Windows Server 2016, 2012, and 2012R2.

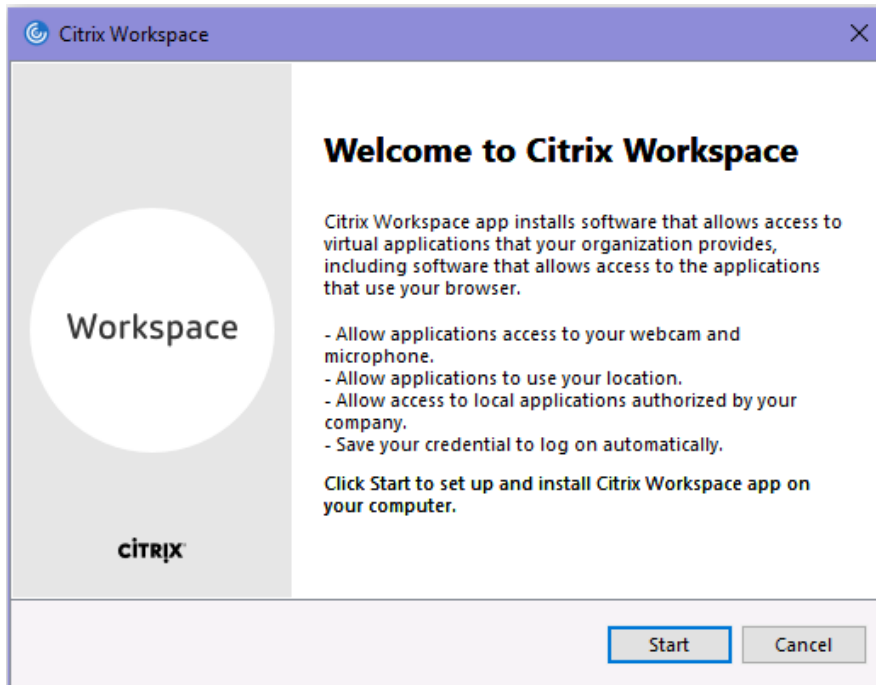
Download Link: <https://www.citrix.com/downloads/workspace-app/>

Workspace should remove any existing **Receiver** client, but if not you can use the **Citrix Receiver Clean-up Utility** before installing **Workspace**. <http://support.citrix.com/article/CTX137494>

Download the installation file and run it on your PC. You will need Administrator rights on the PC to install the program. You will see this:

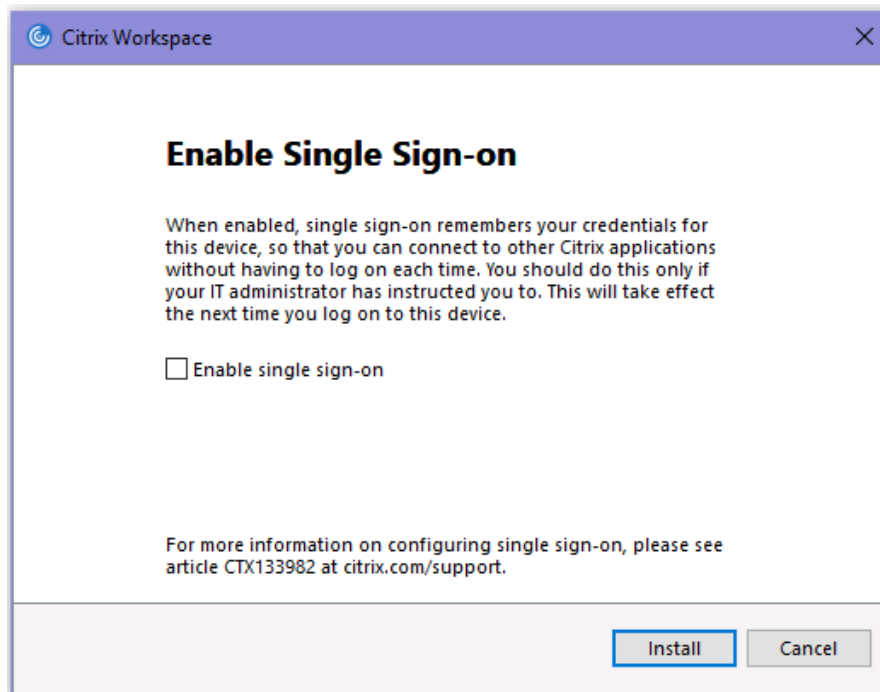


Click on **Start** and accept the license agreement:

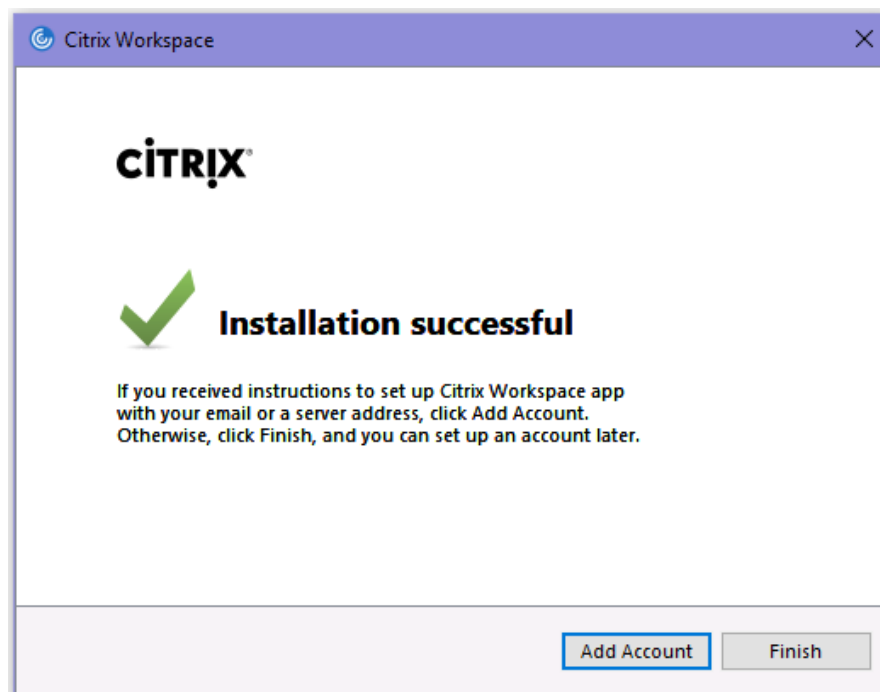


Citrix Workspace App Setup for ACBH – Windows

When you see the next window, do not enable **Single Sign-on**, just continue to install:

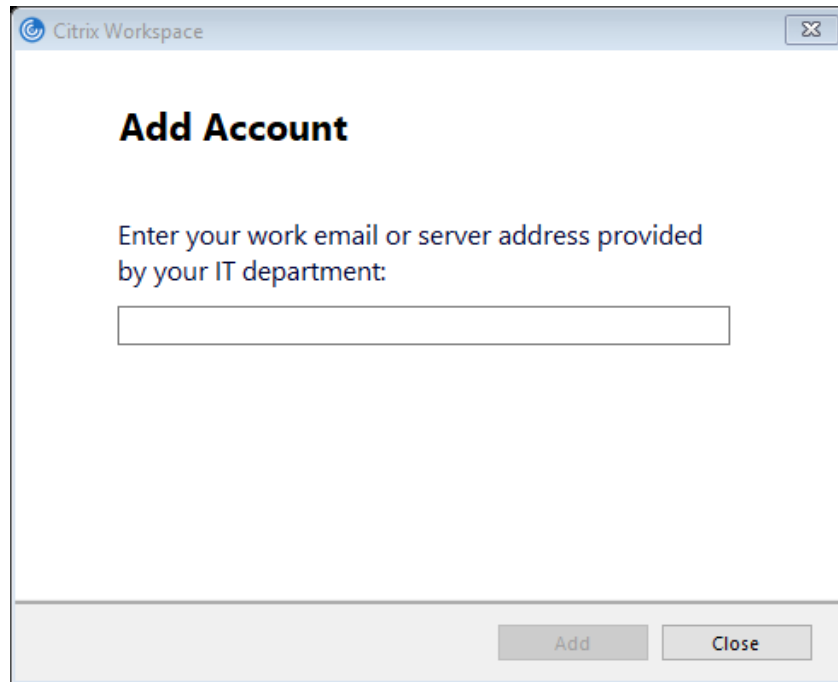


You will get a notice that installation is complete:



Citrix Workspace App Setup for ACBH – Windows

Click on the **Add Account** button and you will get this window:



Do **not** enter your email address, enter <https://bhcsportal.cloud.com/Citrix/StoreWeb>; this tells the **Workspace** app the web address of the BHCS Portal.

You will get a logon box; enter your BHCS network user ID and your network password:

Please make sure to enter in the domain before your username. "USER\"



User name:

Password:

Log On

Citrix Workspace App Setup for ACBH – Windows

Workspace should now be set up.

There are two ways to connect to the BHCS portal: you can start up the **Citrix Workspace** app or you can use a browser and enter <https://bhcsportal.cloud.com/Citrix/StoreWeb> in the address bar.