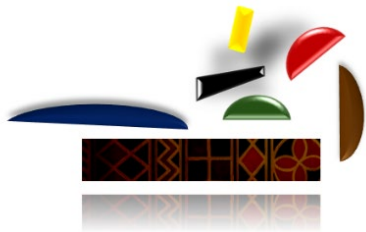


African American Wellness Hub Advisory Committee



November 19, 2025
Committee Meeting

African American Wellness Hub Promotional [Video](#)



AGENDA

Opening & Inaugural Meeting:

African American Wellness Hub Advisory Committee (Hub Advisory Committee)



- **Welcome & Introductions**
- **Purpose of the Advisory Committee**
- **Committee Roles & Expectations**
- **Overview of the Wellness Hub: Vision & Phases**
- **Discussion: Community Priorities & Vision**
- **Meeting Schedule Review**
- **Next Steps & Closing**

Welcome & Introductions



Introductions

- **Please provide a brief (30-second) Introduction with:**
 - **Your Name**
 - **Your Organization (or Community Affiliation)**
 - **Your High Hope** for the African American Wellness Hub Advisory Committee.

Purpose of the African American Wellness Hub Advisory Committee



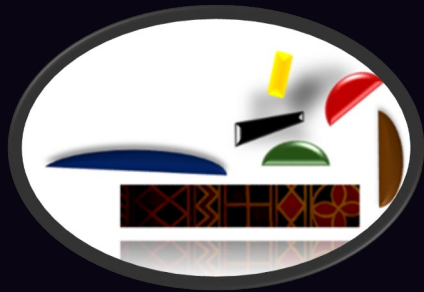
Hub Advisory Committee Purpose:

- The **African American Wellness Hub Advisory Committee** was established (October 2025) by the Department (ACBHD) to provide project specific input into the development of a Hub centering on African American wellness; and co-designed through community input.
 - The initial phase of its convening will serve as a **time-limited body focusing on offering culturally affirming, holistic, and community-based feedback** that will inform design and construction which may be coordinated by ACBHD through General Services Agency (GSA) and other county-contracted construction/design or other related programs.
 - **During this phase, there will be five (5) Hub Advisory Committee meetings between November 2025 and March 2026** (wherein three (3) of the meetings will be In-Person and two (2) meetings will be held virtually).
- ❑ **Today's Meeting Deliverable:** To gather community input to create a Vision Map of Needs and Priorities.

Hub Advisory Committee Webinars & Meeting Structure:

- **In addition to In-person events, the African American Wellness Hub Advisory Committee meetings will always be hosted as interactive Zoom webinars, designed to ensure a structured, accessible, and community-centered engagement experience.**
- **Each session will include county department partners** who will be present to listen, support, facilitate guided discussions and exercises, and help to inform future planning efforts while maintaining a smooth and organized session flow.
- **All meetings will incorporate opportunities for Q&A and feedback exchanges.**
- **Community members will be able to listen and ask questions in the chat.**

Hub Advisory Committee Roles & Expectations



Hub Advisory Committee Roles & Expectations:



- **Advises, Doesn't Decide** – Provides recommendations and input only; will not make binding decisions or manage operations.
- **Formally Established** – Through the ACBHD organizational application or appointment process.
- **External Experts** – Composed of subject matter experts, stakeholders, or community representatives across Alameda County.
- **Transparent Operations** – Meetings and activities are open to public access and will allow for community-wide input.
- **Focused Mission** – Has clearly defined purpose, goals, and membership guidelines; included time-limited activities.
- **No Legal Liability** – Unlike boards of directors, members have no fiduciary duty, though they're expected to act ethically.

Phase I
Wellness
Hub Advisory
Committee
Deliverables:

Final
Presentation &
Departmental
Update

(November 2025 - March 2026)

**Compile Input &
Recommendations**

**Present Input to
ACBHD
Departmental
Leadership**

**Share Executive
Summary with
Advisory
Committee &
Stakeholders**

**Recognize and
Thank Members**

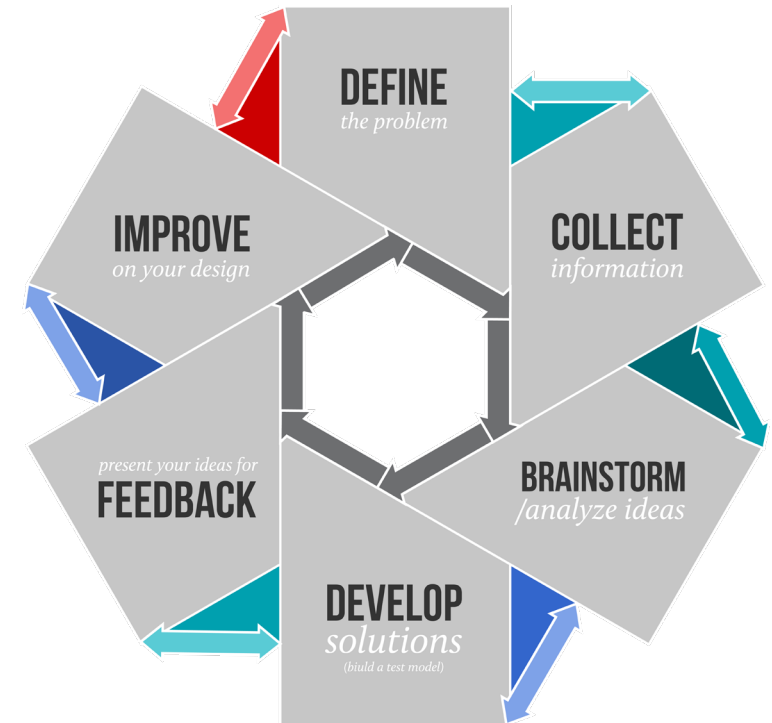
Meeting Frameworks: Inaugural Meeting & Beyond

- **Alternating Meetings (In-Person & Virtual)**

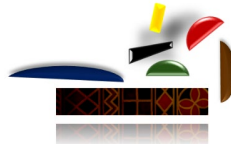
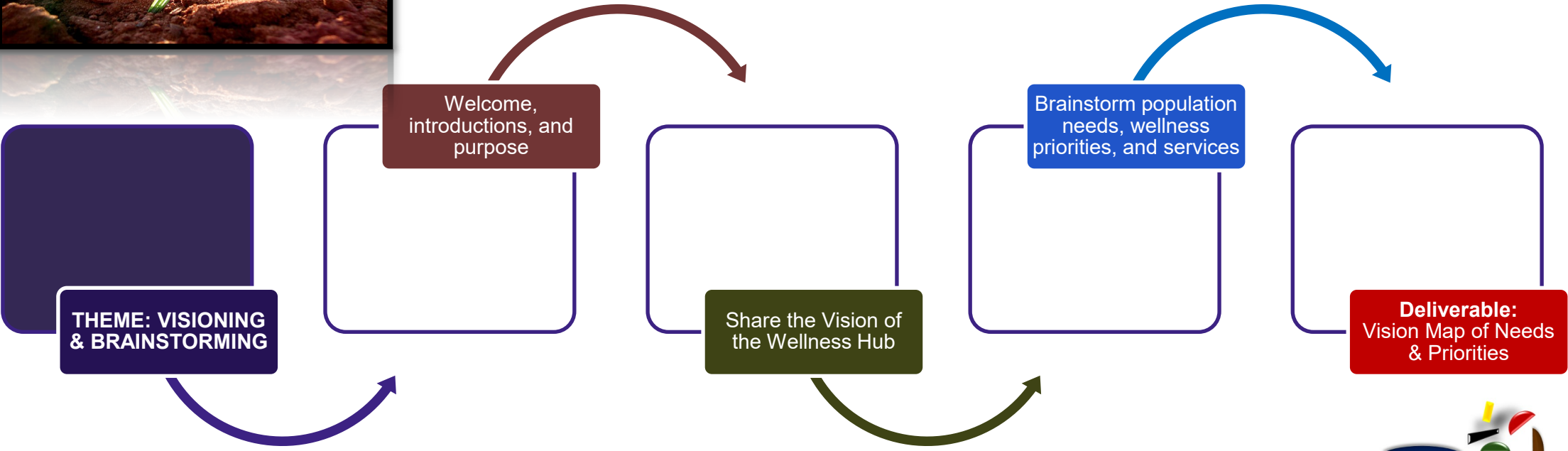
- November 19, 2025 (In-Person: Today)
- December 17, 2025 (Virtual)
- January 21, 2026 (In-Person)
- February 18, 2026 (Virtual)
- March 18, 2026 (In-Person)

- **Third Wednesdays of the Month**

- Each Meeting will focus on completing ***a targeted deliverable*** for this Phase I Committee process.



Meeting 1 Purpose: November 19, 2025 (In-Person)



Overview of the Wellness Hub: Vision & Phases

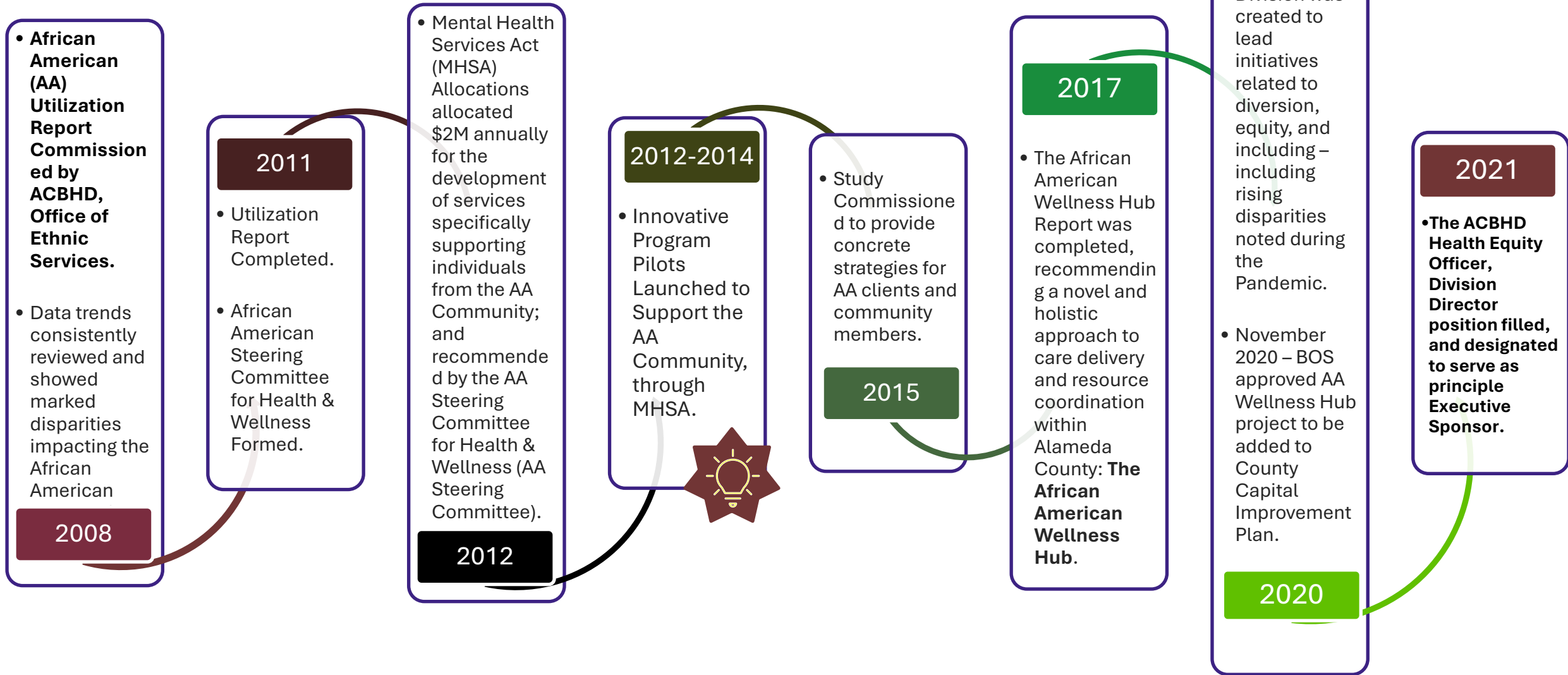


African American Wellness Hub Project Overview:



- The emphasis of this project is to **expand the capacity to deliver**, create, incorporate, and influence systems of healing devoted to the [restoration of wellness for African Americans](#) that connect them to culturally affirming programs and practices.
- The **Hub will serve as a focal point** designed to preserve and actualize the core understanding and best practices of African American people with a focus on wellness.
- The goal is to include direct services, County and CBO partners, service coordination, and systemwide referrals as needed. **Supports may include, but are not limited to, behavioral health, public health, and social services; and referrals to primary/medical care or housing.**
- **ACBHD has dedicated ~\$35 Million dollars to date** towards this effort to support the purchase, construction, and design of a site that will be the flagship site of the African American Wellness Hub.

Background & Historical Project Deliverables



(Approximate Dates)

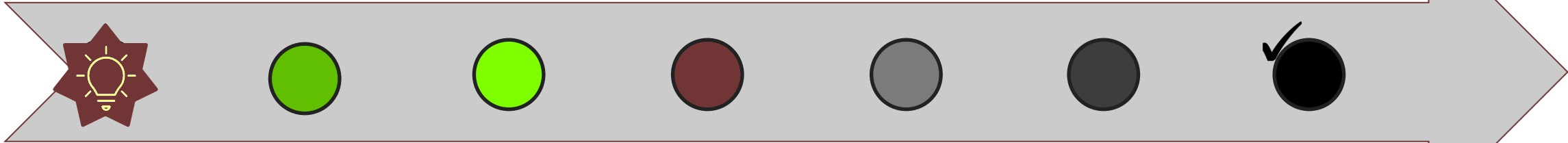
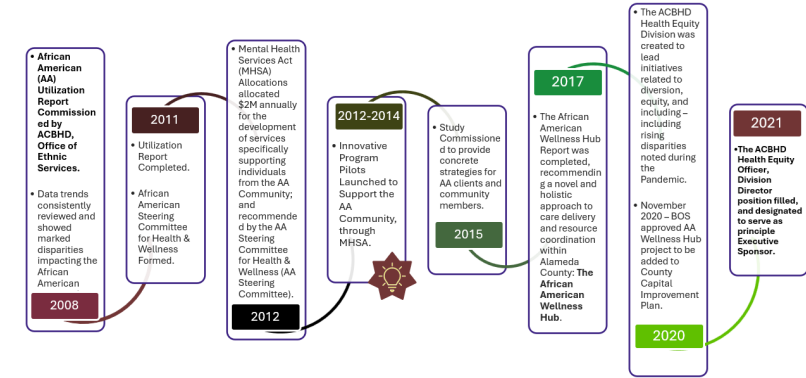
General Services Agency (GSA) Oversight & Support: (Facility Development From Concept to Purchase)

[2014] The *Institute for the Advanced Study of Black Family Life and Culture, Inc.* presented the idea for the AAWHC to ACBHD.

[2020] GSA Granted BOS Approval to pursue this capital project.

[August 2022] 1918 Martin Luther King Jr. Way Site Was Found and GSA began Capital Planning, Site Visits, and Assessments.

[May 2024] After months of negotiations, 1918 MLK Jr Way PURCHASED.



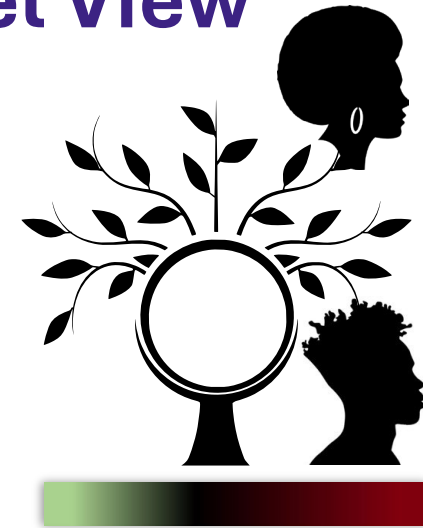
[2017] Research & planning commenced with community feedback and was presented to Alameda County.

[2021] Alameda county dedicated \$19M to fund and begin the search for a potential site.

[April –June 2023] Five (5) Listening Sessions representing all BOS Districts completed.

[June 2023] 1918 MLK JR. Way Purchase initiated.

The African American Wellness Hub Location: Ariel View



The Facility



**DOWNTOWN
OWNER/USER
OPPORTUNITY
OAKLAND, CALIFORNIA**

**1918
MARTIN LUTHER
KING JR WAY
OAKLAND, CA 94612**

**3 Stories with Full Basement
Newly Renovated
Potential Headquarters**



- 15,838 Square Feet
- 0.105 Acres (+/- 4,590 Square Feet)
- Property Type: Office/ Ground Floor Retail
- Three (3) Stories, plus an attic and a full-sized basement
- GSA assessment: More cost effective, efficient, and safe to raise the building with community needs and ADA requirements in mind (i.e., 4 Stairwells, additional elevator, etc. needed).

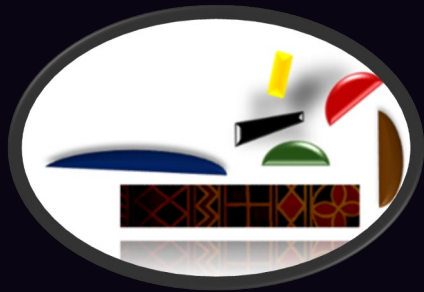
Design-Build: A New Building will be Constructed.



Coming Soon...A Citadel of Wellness



Discussion: Community Priorities & Vision



African American Wellness Hub Themes Identified: (Beyond & Aligned with Initial Report)

- Psychiatry Clinic & Medication Support
- Mental Health & Substance Use Treatment and Supports
- Primary Care & integrative Medical Care, Public Health
- Housing Support
- Justice-Involved Supports & Re-Entry Programs
- Employment
- Peer Recovery Programs
- Family Engagement & Navigation Programs
- Elder & Youth Supports
- Navigation & Benefits Coaching, Social Services
- Faith-Based connections
- Culturally-Rooted Wellness Events & Space-Sharing
- Food, Gardening, & Nutrition
- Crisis Services

Community Themes & Project Vision:

- **Community-Centered** Activities Interest in spaces for art, dance, music, cultural gatherings, storytelling, and shared healing experiences that reflect and celebrate African American heritage and identity.
- **Access to Care & Resources:** Expanded access to psychiatric care, legal support, financial literacy, prevention, and early intervention services delivered in spaces of dignity cultural safety, and trust.
- **Culturally Affirming & Inclusive Spaces:** A vision for a Hub designed by and for the community, where services are delivered in a manner that honors African American identity, lived experience, and leadership.
- **Project Vision:**
 - A healing and empowering hub where African American residents can access resources, build community, celebrate culture, and receive care that honors their full humanity, resilience, and legacy.

Discussion Questions

(**Deliverable:** Vision Map of Needs & Priorities)

Focused Q&A:

- 1) Why is a culturally-centered Wellness Hub important for the Alameda County Community?
- 2) What **strengths** should the Hub uplift in the African American Community?
- 3) Which populations **must** be prioritized?
- 4) What should the Hub feel like when someone enters the building?
- 5) Which partnerships are **essential** for the Hub's success?

(↓Consider ↓)

- ❖ *(What must be achieved through the services/ and programs offered at or through the Wellness Hub?)*
- ❖ *(Problems or issues are often highlighted within the African American Community. What resources may be capitalized upon?)*
- ❖ *(Youth? Elders? Black LGBTQ+? Family Members? Homeless, etc.?)*
- ❖ *(Think ambience. What should the space evoke?)*
- ❖ *(Interagency Partners? Organizations? Faith Institutions? Public/Private partnerships?)*

Discussion Questions

(**Deliverable:** Vision Map of Needs & Priorities)

1) Why is a culturally-centered Wellness Hub important for the Alameda County Community?

- *(Consider: What must be achieved through the services/ and programs offered at or through the Wellness Hub?)*

Discussion Questions

(**Deliverable:** Vision Map of Needs & Priorities)

2) What **strengths** should the Hub uplift in the African American Community?

- *(Consider: What must be achieved through the services/ and programs offered at or through the Wellness Hub?)*

Discussion Questions

(**Deliverable:** Vision Map of Needs & Priorities)

3) Which populations **must** be prioritized?

- *(Consider: Youth? Elders? Black LGBTQ+? Family Members? Homeless, etc.?)*

Discussion Questions

(**Deliverable:** Vision Map of Needs & Priorities)

4) What should the Hub feel like when someone enters the building?

- *(Consider: Think ambience. What should the space evoke?)*

Discussion Questions

(**Deliverable:** Vision Map of Needs & Priorities)

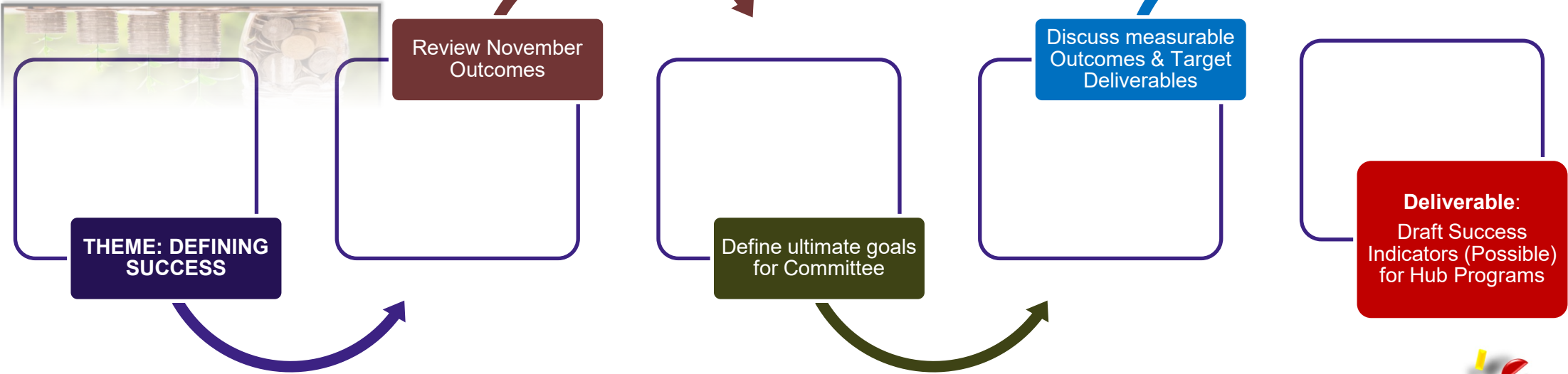
5) Which partnerships are **essential** for the Hub's success?

- *(Consider: Interagency Partners? Organizations? Faith Institutions? Public/Private partnerships?)*

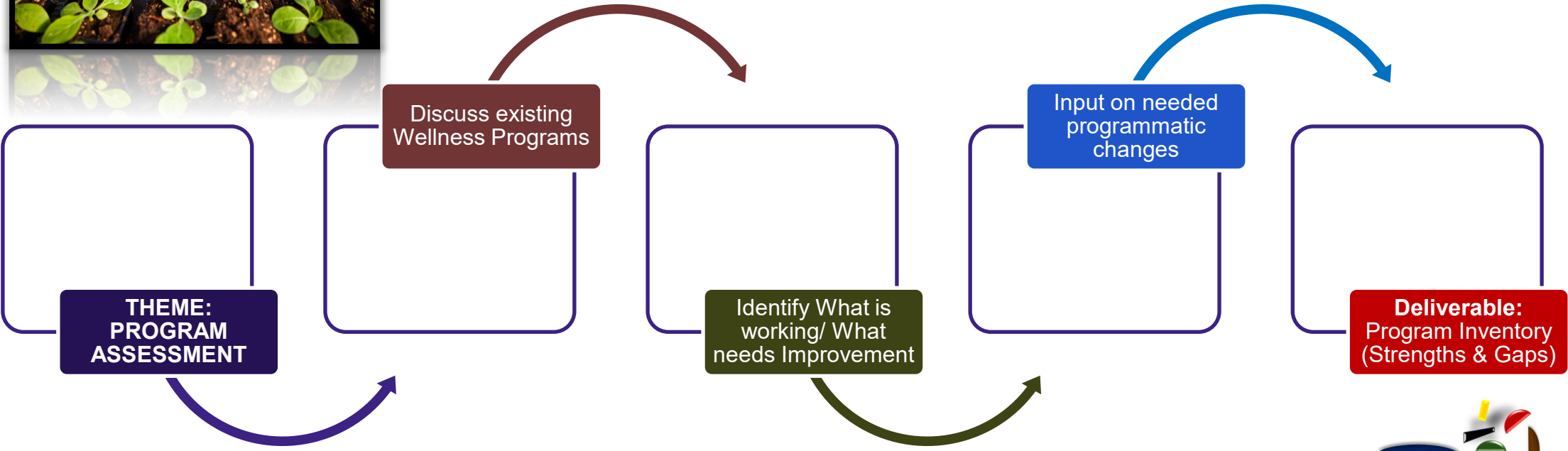
Meeting Schedule Review



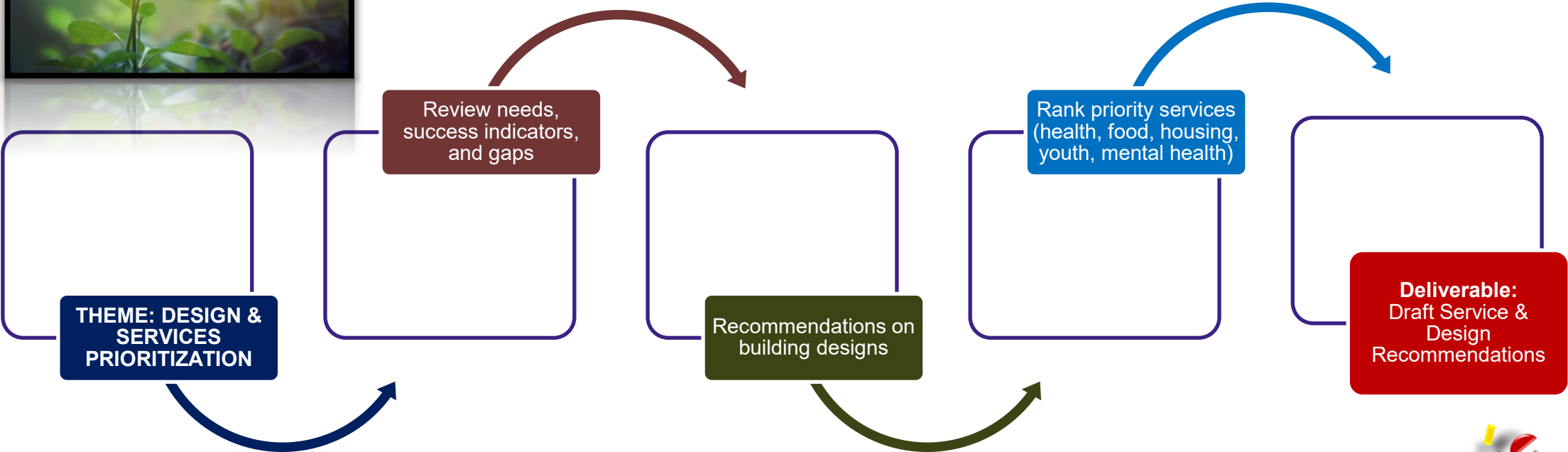
Meeting 2: December 17, 2025 (Virtual)



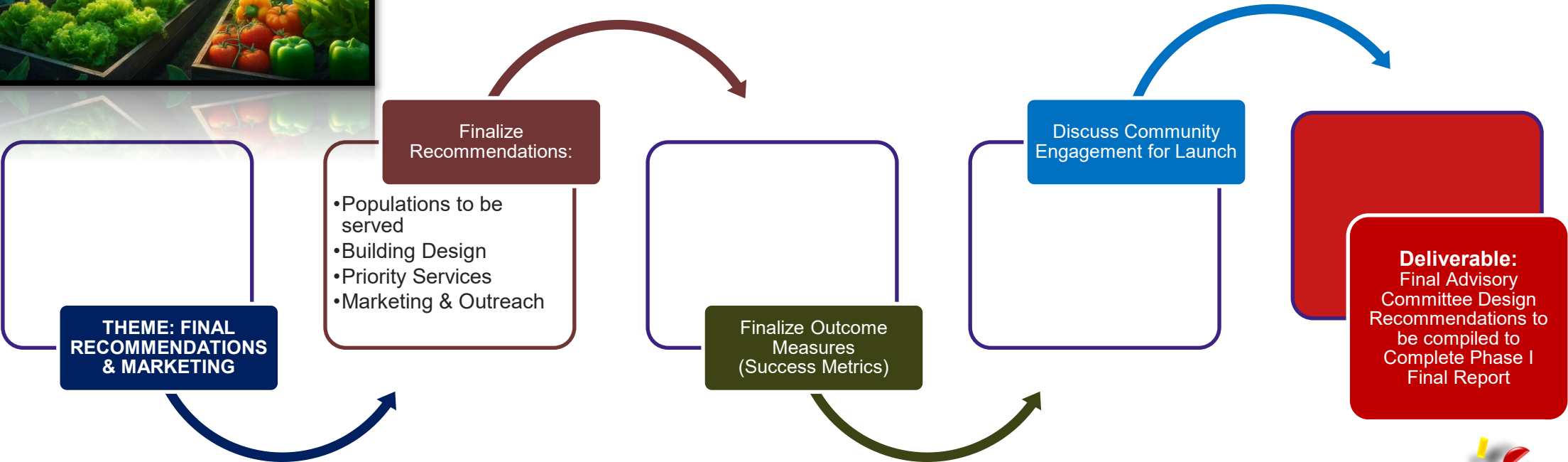
Meeting 3: January 21, 2026 (In-Person)



Meeting 4: February 18, 2026 (Virtual)



Meeting 5: March 18, 2026 (In-Person) – FINAL MEETING



Next Steps & Closing



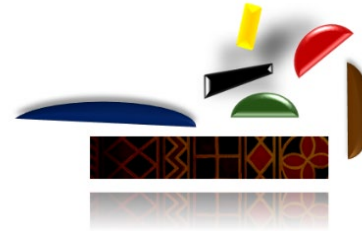
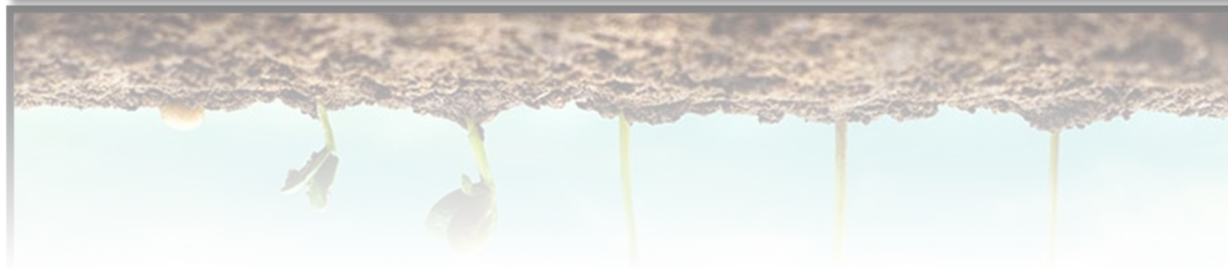
Next Steps:

- Distribute November 2025 meeting summary.
- Draft Vision Map & Community Input Priorities.
- **Next Meeting Date:**
 - **December 17, 2025 - Virtual**



Centering
African American
Health & Wellness

Questions, Comments, or Input?





Thank you.

Tilling & Seeding: The journey continues.