



# **Alameda County Behavioral Health Care Services**

MENTAL HEALTH & SUBSTANCE USE SERVICES

**Forensic, Diversion, Re-entry System of Care: Juvenile Justice Services**

**Presenters:**

**Juan Taizan, Interim Forensic, Diversion, and Re-entry Services Director**

# Juvenile Justice Center (JJC)

- ▶ Includes **Juvenile Hall**, a temporary detention facility for youth awaiting adjudication AND **Camp Wilmont Sweeney**, a 6-9 month detention facility for adjudicated youth.
- ▶ Current census averages approx. 65 youth for the Hall and Camp.
- ▶ While detained, youth have access to behavioral health services and programs (mental health & substance use), comprehensive primary care, and dental and optometry services as needed.
- ▶ The JJC is regulated by state mandates (Title 15) and monitored by the state as well as Alameda County Public Health.

# Juvenile Justice Center



# Forensic System Juvenile Justice Goals and Priorities

- Increase group and family therapy at the Guidance Clinic/Juvenile Justice Center
- Improve quality and coordination of services
- Improve re-entry support for youth who need intensive support
- Support development of new SB823 Unit

# Alameda County Behavioral Health (ACBH) Guidance Clinic

- The Guidance Clinic is located in the Alameda County Juvenile Justice Center in San Leandro.
- The Guidance Clinic provides mental health services to youth/young adults detained in Alameda County Juvenile Hall and Camp Wilmont Sweeney.
- Services include assessment, individual, group, and family therapy, crisis intervention, court ordered evaluations, and re-entry referrals and support.

# Clinic Staffing

Clinic  
Manager  
1 FTE

Psychiatrist  
s  
2 part-time

Behavioral  
Health  
Clinicians  
6 FTEs

Psychologists  
2 FTEs

Mental  
Health  
Specialist  
1 FTE

## *Mental Health Services*

*Case Management*  
*Court-ordered Diagnostic Evaluations*  
*Crisis Intervention*  
*Medication Management*  
*Outpatient Psychotherapy - Individuals, families, groups*  
*Psychiatric Assessment*  
*Psycho-education*

*Services also include consultation to Juvenile Hall staff, Probation Officers, school staff and the Juvenile Court.*

# Direct Therapy

Staff provide brief and long-term therapy to help youth develop coping skills for managing depression, anxiety, and trauma symptoms.

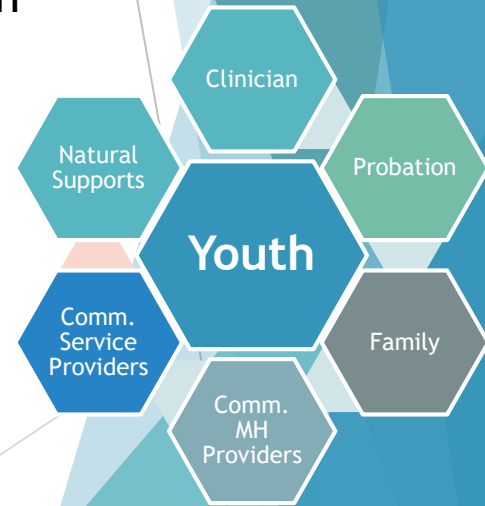
Clinicians provide mental health support groups to youth on each unit and at Camp.

Youth can receive mental health services through referrals from Probation staff, the Courts, school, and self-referrals.



# Transition Center

- Staffed by a Mental Health Specialist (MHS)
- MHS collaborates with multi-disciplinary team to assess youth/family needs and develop an effective re-entry plan
- MHS coordinates referrals to community based mental health services e.g., therapy, case management, psychiatry, etc.
- MHS helps youth/families navigate multiple systems to access supports
- MHS maintains contact with youth/families to ensure access to services
- MHS coordinates with a re-entry referral who provides intensive support for youth with intensive mental health needs.



# Collaborative Court

- Designed for youth in the juvenile justice system who have serious mental health needs
- Youth are referred by attorneys, Judges, Guidance Clinic clinicians, or probation officers
- Works in collaboration with a multi-disciplinary team to best assess client's needs and make intervention recommendations
- Youth are connected to intensive case management to support mental health and ensure successful completion of probation

# Mental Health Services for SB823 Unit

- ACBH will work with Probation to develop therapeutic models for the SB823 Unit.
- Each youth/young adult should receive a mental health assessment and treatment plan.
- Treatment will be client-specific based on the identified mental health needs of each youth/young adult.
- Family/social supports will be engaged in treatment as needed and when agreed upon by clients.

## Mental Health Services for SB823 Unit Cont.

- As needed, youth will receive an institutional multi-disciplinary care coordination plan.
- Group treatment models (e.g., trauma-focused cognitive behavioral therapy) will be offered.
- Psychiatry services will be provided for medication evaluation and management.

# ACBH/Probation Community Mental Health Programs

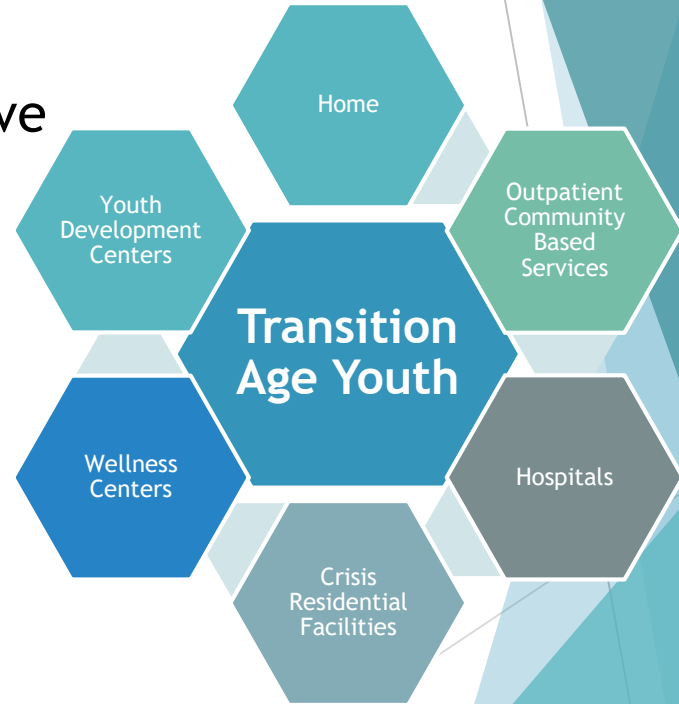
- **Intensive Case Management**—provides individual and family support to clients in Collaborative Court.
- **Multi-Dimensional Family Therapy**—intensive individual and family therapy for clients. Has a specific focus for youth who need support with substance abuse.

# ACBH/Probation Community Mental Health Programs

- **Multi-Systemic Therapy**—intensive individual and family therapy.
- **Project Permanence**—wraparound services for youth and families. Specifically designed for youth at-risk of removal from or re-entering their home.

# ACBH Transition Age Youth (TAY) Programs and Community Partnerships

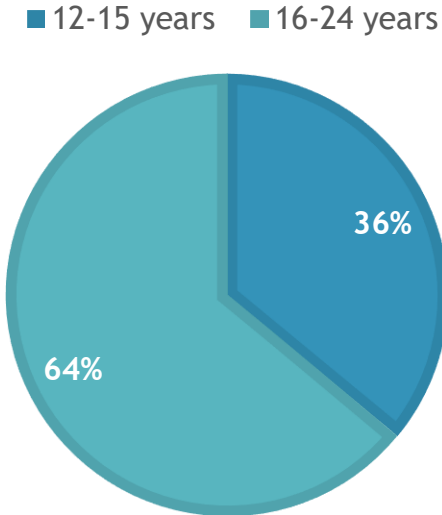
- Full Service Partnerships
- Psychiatric Emergency Services Intensive Case Management
- First Episode Psychosis Programs
- TAY Adult Residential Treatment (ART) Facility
- Juvenile Justice Transition Center & Santa Rita Jail Re-Entry Programs
- Vocational & Employment Support
- TAY Specific In-Home Outreach Team (IHOT)



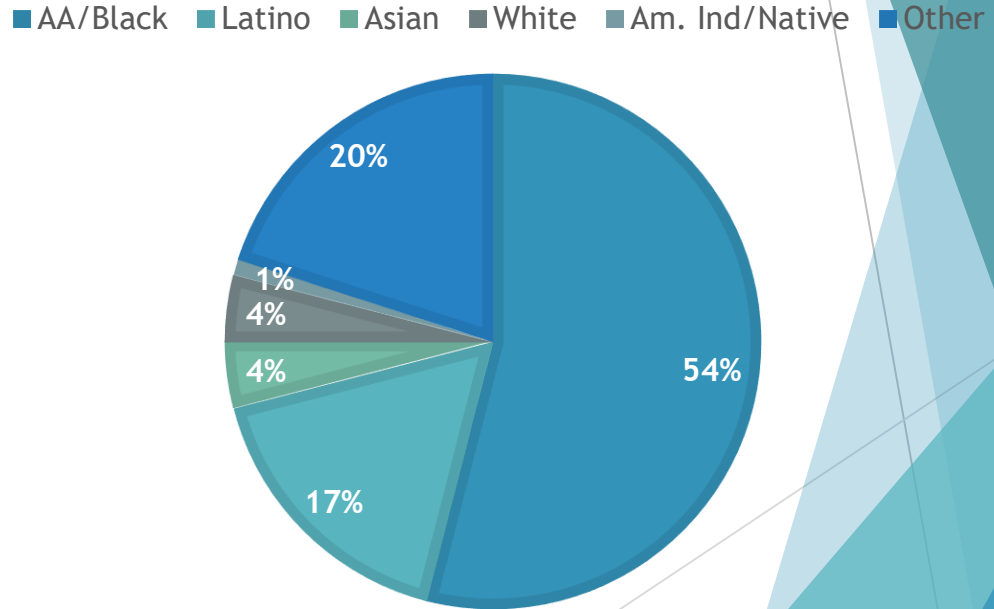
# Who We Serve

Last FY: 491 youth were served by the Guidance Clinic

## AGE



## RACE/ETHNICITY





# Who We Serve

- ▶ 82% of our youth are males and 18% are females.
- ▶ 74% of our youth have Medi-Cal and 26% are uninsured.
- ▶ The majority of our youth live in Oakland, followed by Hayward and the Ashland area.
- ▶ The majority of our youth have complex health needs and are high risk for recidivism, violence, and exploitation.

# Important Notes About ACBH Services

- ACBH services are not mandatory, we will continue to engage and offer services to youth/young adults, but cannot mandate their participation.
- ACBH services are confidential. We can share some info for care coordination but we require a client's authorization to share info related to their treatment.
- ACBH serves individuals who qualify for full-scope Medical and meet medical necessity for Specialty Mental Health Services.

